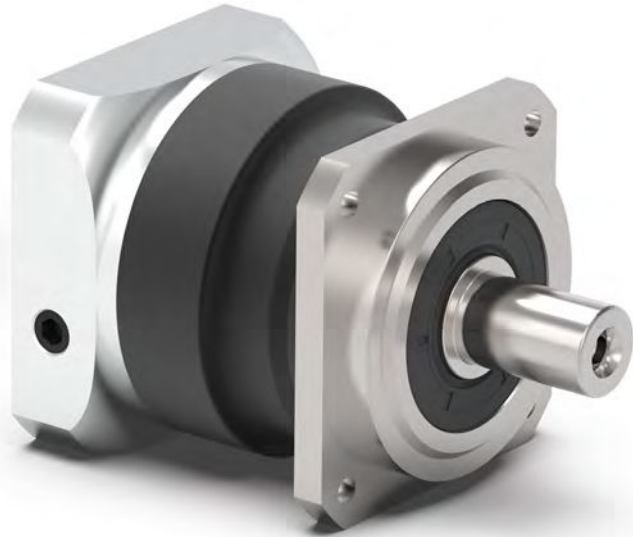


pro NEW



# PSBNpro

The precision planetary gearbox with helical gearing for high speeds and quiet operation

Our **PSBNpro** combines precision planetary gearboxes and efficient bearing technology. Designed for high speeds, it delivers maximum performance thanks to its homogeneous, particularly quiet helical gearing. As a pro variant, it also offers higher torques – reliable, compact, and efficient.

Cyclic torque **14 - 850 Nm**

Radial force **830 - 9500 N**

Axial force **800 - 9600 N**

Torsional backlash **1 - 8 arcmin**

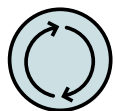
Protection class **IP65**

Frame sizes

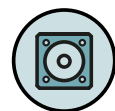
- 55
- 70
- 90
- 115
- 142



Precision Line



Equidirectional rotation



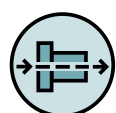
Square type output flange



Rotary shaft seal



Option: Reduced backlash



Coaxial gearbox



Helical gear



Reinforced deep groove ball bearings



Planet carrier in cage design



Option: Painted surface  
– RAL 9005 Jet black

Detailed explanations of the technical features starting on page 201.

Code	Gearbox characteristics			PSBNpro055	PSBNpro070	PSBNpro090	PSBNpro115	PSBNpro142	p <sup>(1)</sup>
	Service life <sup>(2)</sup>	L <sub>h</sub>	h	20,000					
	Efficiency <sup>(3)</sup>	η	%	98					1
				96					2
	Min. operating temperature	T <sub>min</sub>	°C	-25 (-13)					
	Max. operating temperature	T <sub>max</sub>	(°F)	90 (194)					
	Protection class			IP65					
<b>S</b>	Standard lubrication			Oil (lifetime lubrication)					
<b>F</b>	Food grade lubrication			Oil (lifetime lubrication)					
	Installation position			Any					
<b>S</b>	Standard backlash	φ	arcmin	< 6	< 3	< 3	< 3	< 3	1
				< 8	< 5	< 5	< 5	< 5	2
<b>R</b>	Reduced backlash	φ	arcmin	< 4	< 2	< 1	< 1	< 1	1
				< 6	< 3	< 1	< 1	< 1	2
	Torsional stiffness <sup>(3)</sup>	C <sub>2t</sub>	Nm / arcmin (lb <sub>i</sub> .in / arcmin)	1.4 - 2.3 (12 - 20)	4.2 - 5.6 (37 - 50)	10.7 - 13.7 (95 - 121)	29.0 - 36.5 (257 - 323)	59.5 - 76.0 (527 - 673)	1
				1.4 - 2.4 (12 - 21)	3.9 - 5.4 (35 - 48)	10.3 - 13.5 (91 - 119)	26.0 - 35.0 (230 - 310)	58.0 - 71.0 (513 - 628)	2
	Gearbox weight <sup>(3)</sup>	m	kg (lb <sub>m</sub> )	0.8 - 0.9 (1.8 - 1.9)	1.6 - 1.7 (3.6 - 3.7)	3.3 - 3.4 (7.4 - 7.5)	5.6 - 6.0 (12.4 - 13.2)	13.2 - 13.5 (29.0 - 29.7)	1
				1.1 (2.5)	1.7 (3.6 - 3.8)	3.4 - 3.5 (7.5 - 7.7)	6.9 - 7.1 (15.2 - 15.6)	14.6 - 15.1 (32.3 - 33.2)	2
<b>S</b>	Standard surface			Housing: Steel – heat-treated and post-oxidized (black)					
<b>B</b>	Painted surface <sup>(4)</sup>			RAL 9005 Jet black					
	Running noise <sup>(5)</sup>	L <sub>pA</sub>	dB(A)	56	57	58	63	66	

Output shaft loads			PSBNpro055	PSBNpro070	PSBNpro090	PSBNpro115	PSBNpro142	p <sup>(1)</sup>
Maximum radial force	F <sub>r max</sub>	N (lb <sub>i</sub> )	830 (187)	1600 (360)	3100 (697)	4500 (1012)	9500 (2136)	
Maximum axial force	F <sub>a max</sub>		800 (180)	1500 (337)	2800 (629)	4500 (1012)	9600 (2158)	
Maximum tilting moment	M <sub>k max</sub>	Nm (lb <sub>i</sub> .in)	42 (373)	109 (961)	251 (2222)	442 (3916)	1314 - 1329 (11633 - 11759)	

Input characteristics			PSBNpro055	PSBNpro070	PSBNpro090	PSBNpro115	PSBNpro142	p <sup>(1)</sup>
Clamping system diameter input (Code)	D26	mm	11 (C) <sup>(5)</sup>	11 (C)	14 (D)	19 (E)	35 (G) <sup>(5)</sup>	1
			14 (D)	14 (D) <sup>(5)</sup>	19 (E) <sup>(5)</sup>	24 (F) <sup>(5)</sup>	42 (H)	2
			-	19 (E)	24 (F)	35 (G)	-	
			11 (C) <sup>(5)</sup>	11 (C) <sup>(5)</sup>	11 (C)	14 (D)	19 (E)	
			14 (D)	14 (D)	14 (D) <sup>(5)</sup>	19 (E) <sup>(5)</sup>	24 (F) <sup>(5)</sup>	
Mass moment of inertia input <sup>(3)(5)</sup>	J <sub>1</sub>	kgcm <sup>2</sup> (lb <sub>i</sub> .in.s <sup>2</sup> ·10 <sup>-4</sup> )	0.096 - 0.133 (0.850 - 1.177)	0.182 - 0.283 (1.611 - 2.505)	0.548 - 0.895 (4.850 - 7.921)	0.357 - 0.386 (3.160 - 3.416)	8.335 - 14.440 (73.771 - 127.805)	1
			0.096 - 0.113 (0.850 - 1.000)	0.127 - 0.394 (1.124 - 3.487)	0.371 - 0.474 (3.284 - 4.195)	0.327 - 0.338 (2.894 - 2.992)	4.085 - 10.714 (36.155 - 94.827)	2
Average idle torque <sup>(3)(5)</sup>	T <sub>0</sub>	Nm (lb <sub>i</sub> .in)	0.15 - 0.25 (1 - 2)	0.25 - 0.55 (2 - 5)	0.50 - 1.20 (4 - 11)	0.85 - 2.55 (8 - 23)	2.00 - 6.65 (18 - 59)	1
			0.15 - 0.25 (1 - 2)	0.15 - 0.30 (1 - 3)	0.20 - 0.45 (2 - 4)	0.50 - 1.10 (4 - 10)	0.80 - 2.40 (7 - 21)	2
Max. bending moment based on the gearbox input flange	M <sub>b1</sub>		10 (89)	18 (159)	38 (336)	80 (708)	180 (1593)	1
			10 (89)	18 (159)	18 (159)	38 (336)	80 (708)	2

(1) Number of stages

(2) Application specific configuration with NCP – www.neugart.com

(3) The ratio-dependent values can be retrieved in Tec Data Finder – www.neugart.com

(4) More information on page 183

(5) Reference clamping system diameter

Output torques			PSBNpro055	PSBNpro070	PSBNpro090	PSBNpro115	PSBNpro142	i <sup>(1)</sup>	p <sup>(2)</sup>
Cyclic torque <sup>(3)(4)</sup>	T <sub>2z</sub>	Nm (lb <sub>r</sub> .in)	20 (177)	48 (425)	114 (1009)	250 (2213)	520 (4602)	3	1
			25 (221)	68 (602)	150 (1328)	330 (2921)	700 (6196)	4	
			25 (221)	68 (602)	150 (1328)	330 (2921)	850 (7523)	5	
			18.5 (164)	45 (398)	108 (956)	300 (2655)	600 (5310)	7	
			18 (159)	40 (354)	84 (743)	190 (1682)	425 (3762)	8	
			13.5 (119)	32 (283)	72 (637)	190 (1682)	315 (2788)	10	
			20 (177)	48 (425)	114 (1009)	250 (2213)	650 (5753)	12	2
			20 (177)	48 (425)	114 (1009)	250 (2213)	650 (5753)	15	
			25 (221)	68 (602)	150 (1328)	330 (2921)	850 (7523)	16	
			25 (221)	68 (602)	150 (1328)	330 (2921)	850 (7523)	20	
			25 (221)	68 (602)	150 (1328)	330 (2921)	850 (7523)	25	
			25 (221)	68 (602)	150 (1328)	330 (2921)	850 (7523)	35	
			25 (221)	68 (602)	150 (1328)	330 (2921)	850 (7523)	40	
			25 (221)	67 (593)	150 (1328)	330 (2921)	850 (7523)	50	
18.5 (164)	44 (389)	108 (956)	300 (2655)	600 (5310)	70	100			
13.5 (119)	32 (283)	72 (637)	190 (1682)	315 (2788)	100				
Maximum torque <sup>(3)(4)</sup>	T <sub>2max</sub>	Nm (lb <sub>r</sub> .in)	29 (257)	77 (682)	139 (1230)	300 (2655)	520 (4602)	3	1
			40 (354)	83 (735)	200 (1770)	400 (3540)	700 (6196)	4	
			40 (354)	79 (699)	184 (1629)	440 (3894)	870 (7700)	5	
			29 (257)	59 (522)	167 (1478)	395 (3496)	800 (7081)	7	
			28 (248)	64 (566)	134 (1186)	295 (2611)	490 (4337)	8	
			21 (186)	52 (460)	116 (1027)	280 (2478)	500 (4425)	10	
			29 (257)	77 (682)	139 (1230)	395 (3496)	770 (6815)	12	2
			29 (257)	77 (682)	139 (1230)	395 (3496)	770 (6815)	15	
			40 (354)	83 (735)	220 (1947)	520 (4602)	1030 (9116)	16	
			40 (354)	83 (735)	220 (1947)	520 (4602)	1030 (9116)	20	
			40 (354)	79 (699)	184 (1629)	440 (3894)	1070 (9470)	25	
			40 (354)	79 (699)	184 (1629)	440 (3894)	1070 (9470)	35	
			40 (354)	79 (699)	220 (1947)	520 (4602)	1170 (10355)	40	
			40 (354)	79 (699)	184 (1629)	440 (3894)	1070 (9470)	50	
29 (257)	51 (451)	167 (1478)	395 (3496)	800 (7081)	70	100			
21 (186)	52 (460)	116 (1027)	280 (2478)	500 (4425)	100				

<sup>(1)</sup> Ratios (i=n<sub>1</sub>/n<sub>2</sub>)  
<sup>(2)</sup> Number of stages  
<sup>(3)</sup> Application specific configuration with NCP – www.neugart.com  
<sup>(4)</sup> Based on reference clamping system diameter

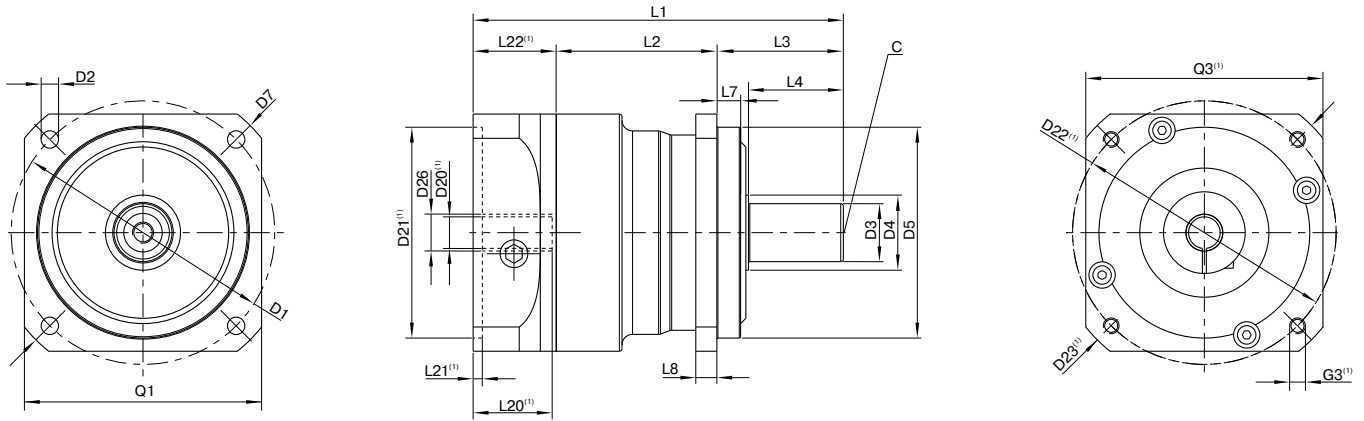
Output torques			PSBNpro055	PSBNpro070	PSBNpro090	PSBNpro115	PSBNpro142	i <sup>(1)</sup>	p <sup>(2)</sup>		
Continuous torque <sup>(3)</sup>	T <sub>2D</sub>	Nm (lb <sub>f</sub> .in)	11 (97)	27 (239)	54 (478)	141 (1248)	430 (3806)	3	1		
			18.5 (164)	35 (310)	82 (726)	177 (1567)	510 (4514)	4			
			17.5 (155)	35 (310)	74 (655)	152 (1345)	475 (4204)	5			
			15.5 (137)	37 (327)	77 (682)	152 (1345)	460 (4071)	7			
			15 (133)	34 (301)	71 (628)	150 (1328)	425 (3762)	8			
			11 (97)	27 (239)	61 (540)	159 (1407)	315 (2788)	10			
			16 (142)	38 (336)	74 (655)	191 (1690)	550 (4868)	12			
			17.5 (155)	41 (363)	79 (699)	192 (1699)	475 (4204)	15			
					25 (221)	53 (469)	79 (699)	180 (1593)	465 (4116)	16	2
					25 (221)	57 (504)	87 (770)	190 (1682)	465 (4116)	20	
					25 (221)	57 (504)	76 (673)	164 (1452)	410 (3629)	25	
					25 (221)	61 (540)	89 (788)	190 (1682)	475 (4204)	35	
					25 (221)	61 (540)	94 (832)	200 (1770)	500 (4425)	40	
					25 (221)	57 (504)	103 (912)	220 (1947)	550 (4868)	50	
					15.5 (137)	40 (354)	92 (814)	220 (1947)	510 (4514)	70	
					11 (97)	27 (239)	61 (540)	162 (1434)	315 (2788)	100	

Input speeds			PSBNpro055	PSBNpro070	PSBNpro090	PSBNpro115	PSBNpro142	i <sup>(1)</sup>	p <sup>(2)</sup>		
Continuous input speed <sup>(3)(4)</sup>	n <sub>1D</sub>	rpm	4300	3500	3150	2050	1150	3	1		
			4300	4450	3000	2250	1750	4			
			4850	4500	3850	3050	2400	5			
			5000	4500	4000	3500	3000	7			
			5000	4500	4000	3500	3000	8			
			5000	4500	4000	3500	3000	10			
			5000	4500	4500	3000	1900	12			
			4750	4500	4500	3700	2700	15			
					5000	4500	4500	3600	2550	16	2
					4500	4500	4500	4000	3200	20	
					5000	4500	4500	4000	3500	25	
					5000	4500	4500	4000	3500	35	
					5000	4500	4500	4000	3500	40	
					5000	4500	4500	4000	3500	50	
					5000	4500	4500	4000	3500	70	
					5000	4500	4500	4000	3500	100	
Max. mechanical input speed <sup>(3)</sup>	n <sub>1max</sub>	rpm	10000	10000	10000	8500	6500		1		
			10000	10000	10000	10000	8500		2		

Output torques			PSBNpro055	PSBNpro070	PSBNpro090	PSBNpro115	PSBNpro142	i <sup>(1)</sup>	p <sup>(2)</sup>		
Emergency stop torque <sup>(4)(5)</sup>	T <sub>2Stop</sub>	Nm (lb <sub>f</sub> .in)	55 (487)	120 (1062)	210 (1859)	495 (4381)	1050 (9293)	3	1		
			55 (487)	150 (1328)	280 (2478)	650 (5753)	1400 (12391)	4			
			55 (487)	150 (1328)	300 (2655)	650 (5753)	1750 (15489)	5			
			55 (487)	102 (903)	255 (2257)	650 (5753)	1390 (12303)	7			
			50 (443)	117 (1036)	295 (2611)	500 (4425)	850 (7523)	8			
			24 (212)	61 (540)	141 (1248)	295 (2611)	740 (6550)	10			
			55 (487)	150 (1328)	300 (2655)	650 (5753)	1340 (11860)	12			
			55 (487)	150 (1328)	300 (2655)	650 (5753)	1340 (11860)	15			
					55 (487)	150 (1328)	300 (2655)	650 (5753)	1780 (15754)	16	2
					55 (487)	150 (1328)	300 (2655)	650 (5753)	1780 (15754)	20	
					55 (487)	150 (1328)	300 (2655)	650 (5753)	2000 (17701)	25	
					55 (487)	150 (1328)	300 (2655)	650 (5753)	2000 (17701)	35	
					55 (487)	150 (1328)	300 (2655)	650 (5753)	2000 (17701)	40	
					55 (487)	150 (1328)	300 (2655)	650 (5753)	1490 (13188)	50	
					55 (487)	89 (788)	255 (2257)	600 (5310)	1390 (12303)	70	
					24 (212)	61 (540)	116 (1027)	295 (2611)	740 (6550)	100	



(1) Ratios (i=n<sub>1</sub>/n<sub>2</sub>)  
 (2) Number of stages  
 (3) Application specific configuration with NCP – www.neugart.com  
 (4) Based on reference clamping system diameter  
 (5) Permitted 1000 times

# PSBNpro Dimensions



Drawing corresponds to a PSBNpro090 / 1-stage / smooth output shaft / 14 mm clamping system / motor adaptation – 2-part – round universal flange / B5 flange type motor

(1) The dimensions vary with the motor/gearbox flange. The input flange dimensions can be retrieved for each specific motor in Tec Data Finder at [www.neugart.com](http://www.neugart.com)

Geometry <sup>(2)</sup>			PSBNpro 055	PSBNpro 070	PSBNpro 090	PSBNpro 115	PSBNpro 142	p <sup>(3)</sup>	Code
Pitch circle diameter output	D1		63 (2.480)	70 (2.756)	100 (3.937)	130 (5.118)	165 (6.496)		
Mounting bore output	D2	4x	5.5 (0.217)	5.5 (0.217)	6.6 (0.260)	9.0 (0.354)	11.0 (0.433)		
Shaft diameter output	D3	j6	13 (0.512)	16 (0.630)	22 (0.866)	32 (1.260)	40 (1.575)		
Shaft collar output	D4		17 (0.669)	25 (0.984)	28.5 (1.122)	38.5 (1.516)	48.5 (1.909)		
Centering diameter output	D5	g6	50 (1.969)	50 (1.969)	80 (3.150)	110 (4.331)	130 (5.118)		
Diagonal dimension output	D7		74 (2.913)	80 (3.150)	115 (4.528)	148 (5.827)	185 (7.283)		
Flange cross section output	Q1	■	55 (2.165)	60 (2.362)	90 (3.543)	115 (4.528)	140 (5.512)		
Min. total length	L1		93.5 (3.681)	116.5 (4.587)	140.5 (5.531)	182.5 (7.185)	247.5 (9.744)	1	
			117 (4.606)	145 (5.709)	162.5 (6.398)	204 (8.032)	279 (10.984)	2	
Housing length	L2		43 (1.693)	54 (2.126)	61 (2.402)	74 (2.913)	100.5 (3.957)	1	
			56.5 (2.224)	82.5 (3.248)	89 (3.504)	107.5 (4.232)	138.5 (5.453)	2	
Shaft length output	L3		26 (1.024)	37 (1.457)	48 (1.890)	65 (2.559)	97 (3.819)		
Centering depth output	L7		6 (0.217)	6 (0.236)	9 (0.354)	4 (0.157)	12 (0.472)		
Flange thickness output	L8		6 (0.236)	6 (0.236)	8 (0.315)	10 (0.394)	12 (0.472)		
Center hole (DIN 332. type DR)	C		M4x10	M5x12.5	M8x19	M12x28	M16x36		
Motor shaft diameter j6/k6	D20		More information on page 191/192						
Clamping system diameter input	D26		More information on page 106						
Output shaft with feather key (DIN 6885-1)			A 5x5x16	A 5x5x25	A 6x6x28	A 10x8x50	A 12x8x65		<b>A</b>
Feather key width (DIN 6885-1)	B1		5 (0.197)	5 (0.197)	6 (0.236)	10 (0.394)	12 (0.472)		
Shaft height including feather key (DIN 6885-1)	H1		15 (0.591)	18 (0.709)	24.5 (0.965)	35 (1.378)	43 (1.693)		
Shaft length from shoulder	L4		19 (0.748)	28 (1.102)	36 (1.417)	58 (2.283)	82 (3.228)		
Feather key length	L5		16 (0.630)	25 (0.984)	28 (1.102)	50 (1.969)	65 (2.559)		
Distance from shaft end	L6		2 (0.079)	2 (0.079)	4 (0.157)	4 (0.157)	8 (0.315)		
Smooth output shaft									<b>B</b>
Shaft length from shoulder	L4		19 (0.748)	28 (1.102)	36 (1.417)	58 (2.283)	82 (3.228)		

<sup>(2)</sup> Dimensions in mm

<sup>(3)</sup> Number of stages