

Linear measuring technology

Draw-wire encoder A30	Compact-Line	Measuring length max. 0.6 m
------------------------------	---------------------	------------------------------------



The draw-wire mechanics A30 with analog output stands out with its miniaturized design. It is available with potentiometer, voltage or current output.



Analog output

Wide temperature range	High protection level	Reverse polarity protection	Easy mounting	Compact design

Miniaturized and simple

- Measuring length up to 600 mm.
- For applications with a low traversing speed.
- Easy to install.
- Housing of reinforced plastic.

Order code	D5.350X.AXXX.0000
draw-wire encoder	Type a b c

- | | | |
|--|---|--|
| a Measuring range
A = 300 mm ¹⁾
B = 600 mm | b Output circuit
11 = analog output 4 ... 20 mA
22 = analog output 0 ... 10 V DC
supply voltage 15 ... 28 V DC
33 = potentiometer output 10 kΩ | c Type of connection
4 = radial cable, 0.5 m [1.64'] |
|--|---|--|

Accessories for draw-wire encoder	Dimensions in mm [inch]	Order no.
--	-------------------------	-----------

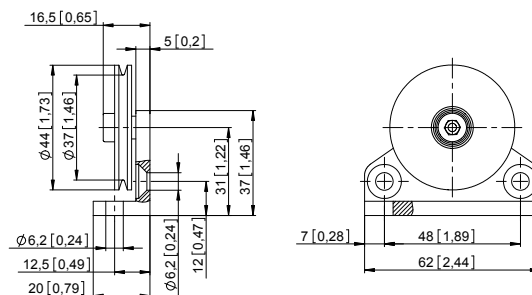
Guide pulley



- Technical data:
- mounting bracket (anodized alum.)
 - guide pulley (plastic POM)
 - ball bearing (type 696-2R5)

- Scope of delivery:
- 2 x countersunk screws for lateral fixing
 - 2 x hexagonal screws for fixing on a flat surface

8.0000.7000.0045



1) Not suitable for potentiometer output / order code **b** output circuit = 33.

Linear measuring technology

Draw-wire encoder A30	Compact-Line	Measuring length max. 0.6 m
------------------------------	---------------------	------------------------------------

Technical data

Mechanical characteristics (draw-wire mechanics)							
Speed max.	0.8 m/s						
Acceleration max.	32.3 m/s ²						
Working temperature	-10 °C ... +80 °C [+14 °F ... +176 °F]						
Protection acc. to EN 60529	IP50						
Weight	approx. 60 g [2.12 oz]						
Extension force F_{min}	3 N						
Repeat accuracy	±0.15 mm						
Linearity	±0.35 %						
Material	<table border="0" style="width: 100%;"> <tr> <td style="padding-right: 10px;">housing</td> <td>plastic</td> </tr> <tr> <td>wire</td> <td>stainless-steel ø 0.4 mm</td> </tr> <tr> <td></td> <td>plastic-coated</td> </tr> </table>	housing	plastic	wire	stainless-steel ø 0.4 mm		plastic-coated
housing	plastic						
wire	stainless-steel ø 0.4 mm						
	plastic-coated						

Approvals	
CE compliant in accordance with	
EMC Directive	2014/30/EU
RoHS Directive	2011/65/EU

Electrical characteristics			
Analog output	0 ... 10 V DC	4 ... 20 mA	potentiometer 10 kΩ
Supply voltage	15 ... 28 V DC	–	–
Operating range	–	15 ... 28 V DC	max. 48 V DC
Max. load current	15 mA	–	–
Load	–	max. 500 Ω	–

Terminal assignment (analog output)

Analog sensor A11 (4 ... 20 mA)			R/I converter				
			Signal:	+V	I _{out}	n.c.	
			Cable	Core color:	BN	WH	
Analog sensor A22 (0 ... 10 V DC)			R/U converter				
			Signal:	+V	0 V		U _{out}
			Cable	Core color:	BN		WH
Analog sensor A33 (Potentiometer 10 kΩ)			Potentiometer				
			Signal:	+V	0 V		Out
			Cable	Core color:	BN		WH

Linear measuring technology

Draw-wire encoder A30	Compact-Line	Measuring length max. 0.6 m
------------------------------	---------------------	------------------------------------

Dimensions

Dimensions in mm [inch]

